



GREEN  
CLIMATE  
FUND

# GCF REGIONAL DIALOGUE

with LATIN AMERICA

**Santo Domingo, Dominican Republic**  
15–17 September 2025





GREEN  
CLIMATE  
FUND

GCF REGIONAL DIALOGUE  
with LATIN AMERICA

# GCF's Sustainability Policies and Operational Safeguards

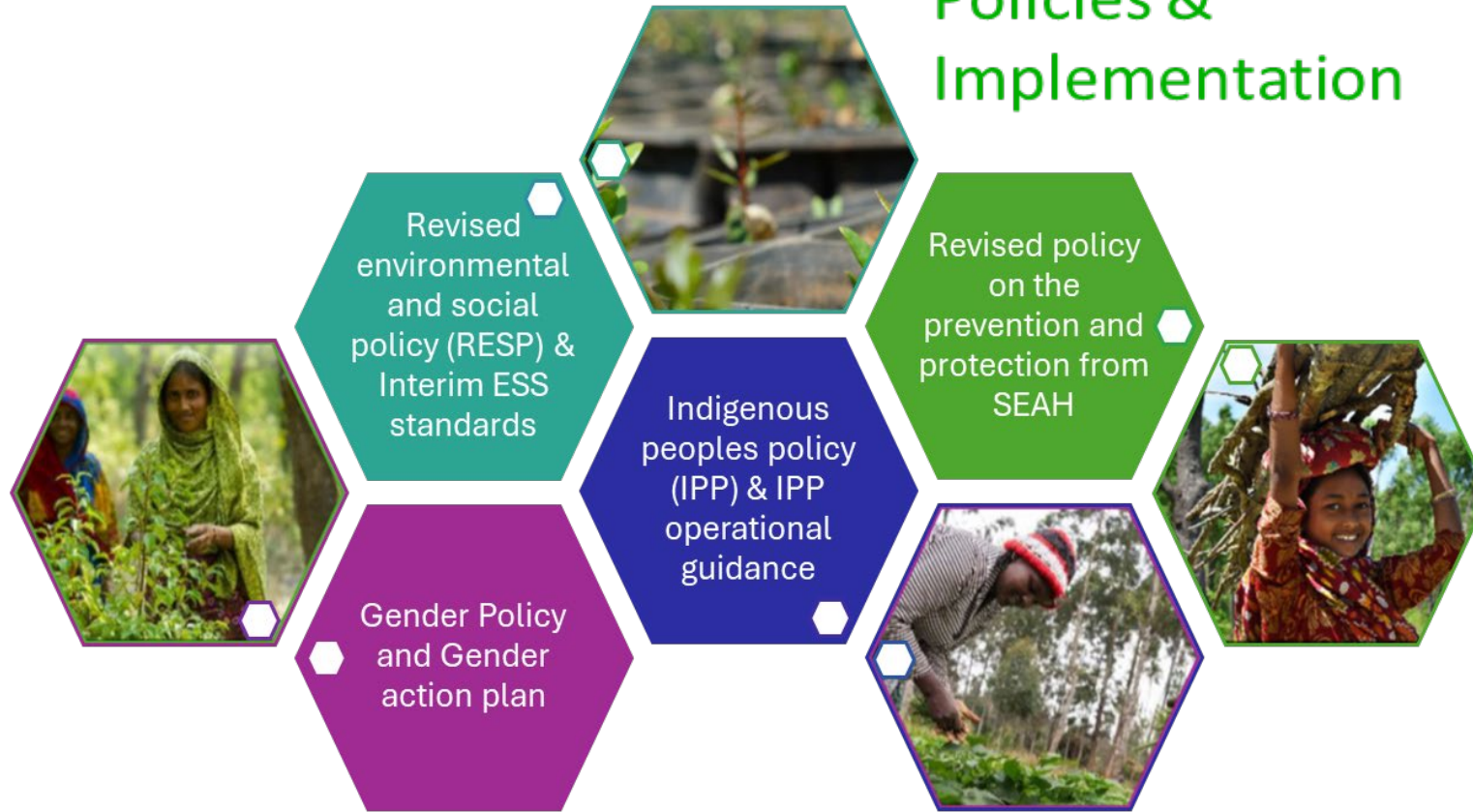
Jose Frazier Gomez  
Environment and Social Specialist

**Santo Domingo, Dominican Republic**  
15–17 September 2025



# Sustainability Policy Architecture

## Policies & Implementation



Promote environmental, social, economic and development co-benefits and take a gender-sensitive approach



Ensure environmental and Social Safeguards are applied to all programmes and projects



Support strengthening of capacities in recipient countries to enable them to meet the safeguards

## Safeguarding and impacts

# Improving outcomes

## Environmental and Social Management System

“do no harm”

“do good”

Protective and  
mitigative  
safeguards

Focus on risks  
and impacts

Improving  
outcomes

Environmental  
and social co-  
benefits

# GCF's approach to ESS, Gender and Indigenous Peoples issues

## Revised Environmental and Social Policy

- Specific added provisions on SEAH safeguarding since 2021

## ESS Standards

- IFC Performance Standards
- New ESS being developed

## Updated Gender Policy

- Gender assessment
- GAP

## Indigenous Peoples Policy

- Free, prior & informed consent



# RESP & Environmental and Social Safeguards



**PS1: Assessment and Management of E&S Risks and Impacts**



**PS2: Labor and Working Conditions**



**PS3: Resource Efficiency and Pollution Prevention**



**PS4: Community Health, Safety and Security**



**PS5: Land Acquisition and Involuntary Resettlement**



**PS6: Biodiversity Conservation and Sustainable Management of Living Natural Resources**



**PS7: Indigenous Peoples**

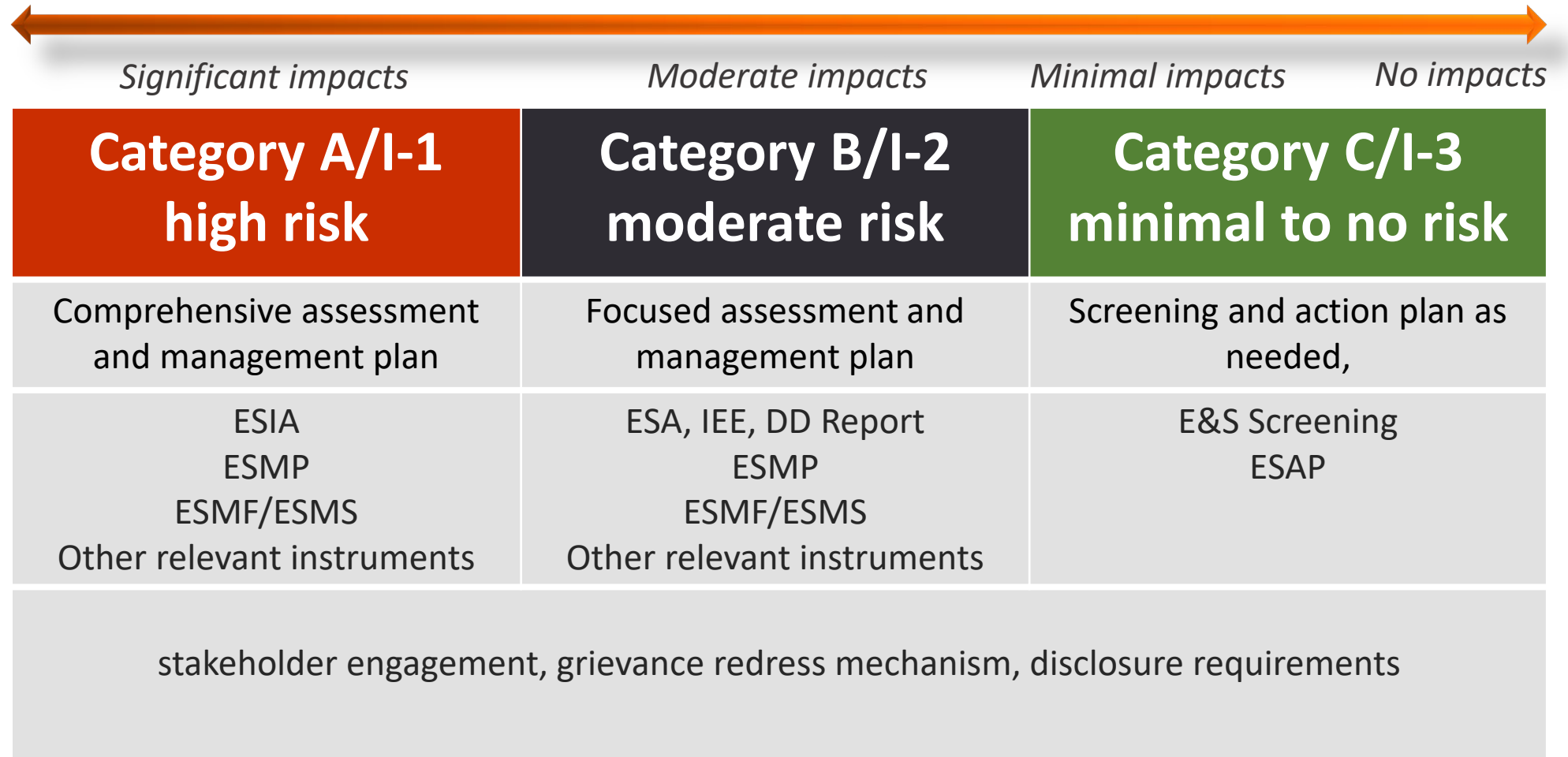


**PS8: Cultural Heritage**

Revised Environmental and Social Policy contains component on SEAH and link with GCF's Information Disclosure Policy.

Santo Domingo, Dominican Republic | 15–17 September 2025

# Environmental and Social Due Diligence – Risk Based Approach



Performance Standards	Required Plans/Procedures
PS1: Assessment and Management of Environmental and Social Risks and Impacts	<ul style="list-style-type: none"> <li>- Environmental and Social Management System (ESMS)/Framework (ESMF)</li> <li>- Environmental and Social Impact Assessment (ESIA)</li> <li>- Environmental and Social Action Plan (ESAP)/Management Plan (ESMP)</li> <li>- Stakeholder Engagement Plan (SEP)</li> </ul>
PS2: Labor and Working Conditions	<ul style="list-style-type: none"> <li>- Human Resources Policy and Procedures</li> <li>- Workers' Grievance Mechanism</li> <li>- Occupational Health and Safety (OHS) Plan</li> <li>- Workers' Accommodation Plan (if applicable)</li> <li>- Retrenchment Plan (if applicable)</li> </ul>
PS3: Resource Efficiency and Pollution Prevention	<ul style="list-style-type: none"> <li>- Resource Efficiency Plan</li> <li>- Pollution Prevention and Control Plan</li> <li>- Waste Management Plan</li> <li>- Hazardous Materials Management Plan</li> <li>- Integrated Pest Management Plan (if applicable)</li> </ul>
PS4: Community Health, Safety, and Security	<ul style="list-style-type: none"> <li>- Community Health and Safety Plan</li> <li>- Emergency Preparedness and Response Plan</li> <li>- Security Management Plan (if security personnel engaged)</li> </ul>
PS5: Land Acquisition and Involuntary Resettlement	<ul style="list-style-type: none"> <li>- Resettlement Action Plan (RAP)</li> <li>- Livelihood Restoration Plan (LRP)</li> <li>- Supplemental Resettlement Plan (if government-led)</li> <li>- Grievance Mechanism for Displaced Persons</li> </ul>
PS6: Biodiversity Conservation and Sustainable Management of Living Natural Resources	<ul style="list-style-type: none"> <li>- Biodiversity Action Plan (BAP)</li> <li>- Biodiversity Management Plan (BMP)</li> <li>- Invasive Species Management Plan (if applicable)</li> <li>- Supply Chain Management Plan (for primary suppliers)</li> </ul>
PS7: Indigenous Peoples	<ul style="list-style-type: none"> <li>- Indigenous Peoples Plan (IPP)</li> <li>- Community Development Plan (if integrated)</li> <li>- Free, Prior, and Informed Consent (FPIC) Documentation</li> <li>- Grievance Mechanism for Indigenous Peoples</li> </ul>
PS8: Cultural Heritage	<ul style="list-style-type: none"> <li>- Cultural Heritage Management Plan</li> <li>- Chance Find Procedure</li> <li>- Critical Cultural Heritage Protection Plan (if applicable)</li> <li>- Benefit Sharing Agreement (if commercial use of intangible heritage)</li> </ul>



# SEAH Safeguarding in GCF

## Policy

Prevention and Protection from SEAH (adopted in 2019, revised in 2021)

Revisions to Environmental and Social Policy (ESP) (2021)

## Responsibilities

**AEs**

- positively demonstrate due diligence and assessed risk of SEAH during funding proposal development
- put in place SEAH prevention and mitigation measures identified

**GCF**

- develop a SEAH Action Plan outlining concrete implementation plans of requirements in the revised policy

# Sexual Exploitation, Abuse & Harassment (SEAH) Risk Assessment Tool – Purpose & Scope



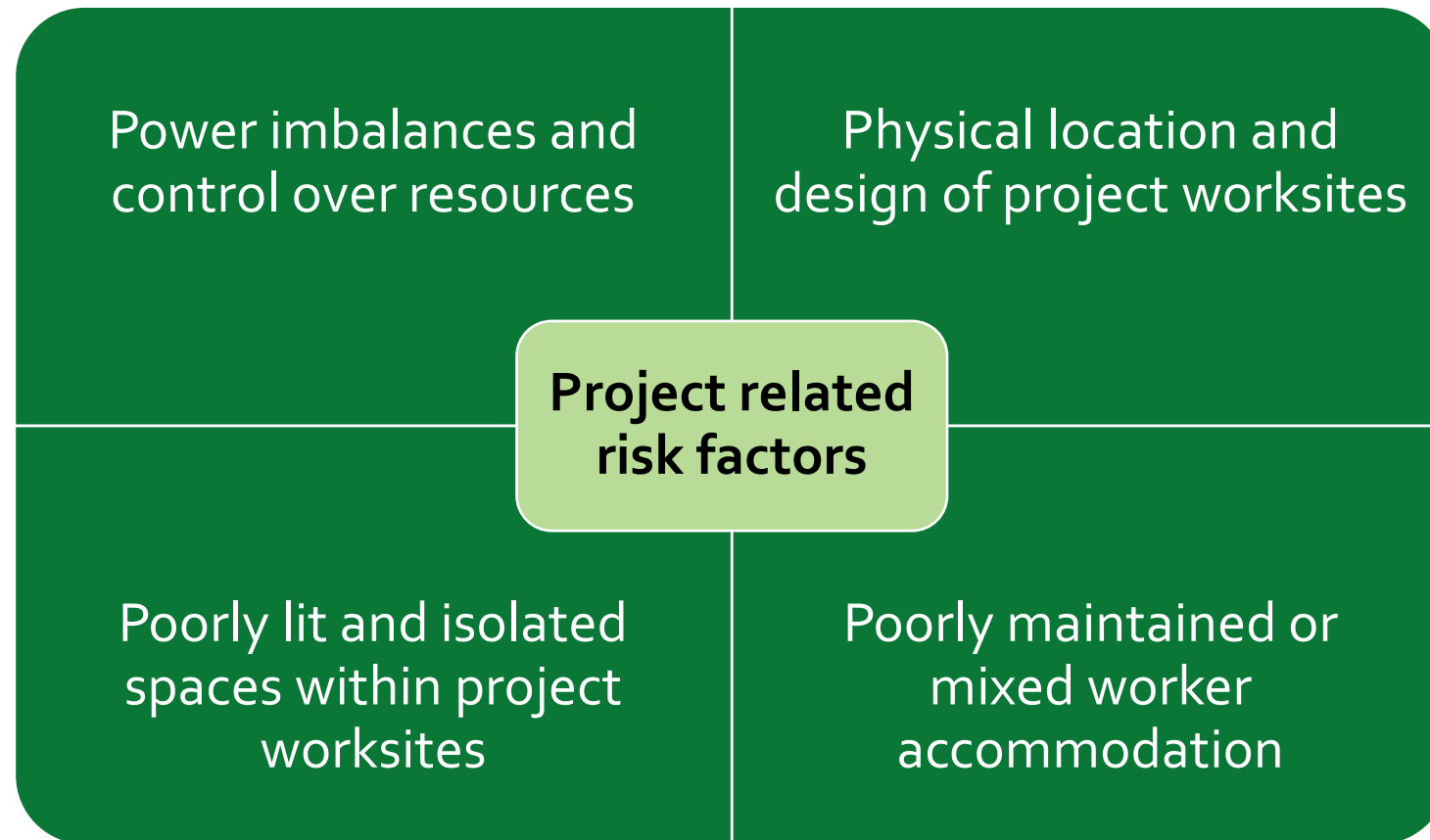
## SEXUAL EXPLOITATION, ABUSE AND HARASSMENT (SEAH) RISK ASSESSMENT GUIDELINE

A Toolkit for Green Climate Fund (GCF) Financed  
Activities

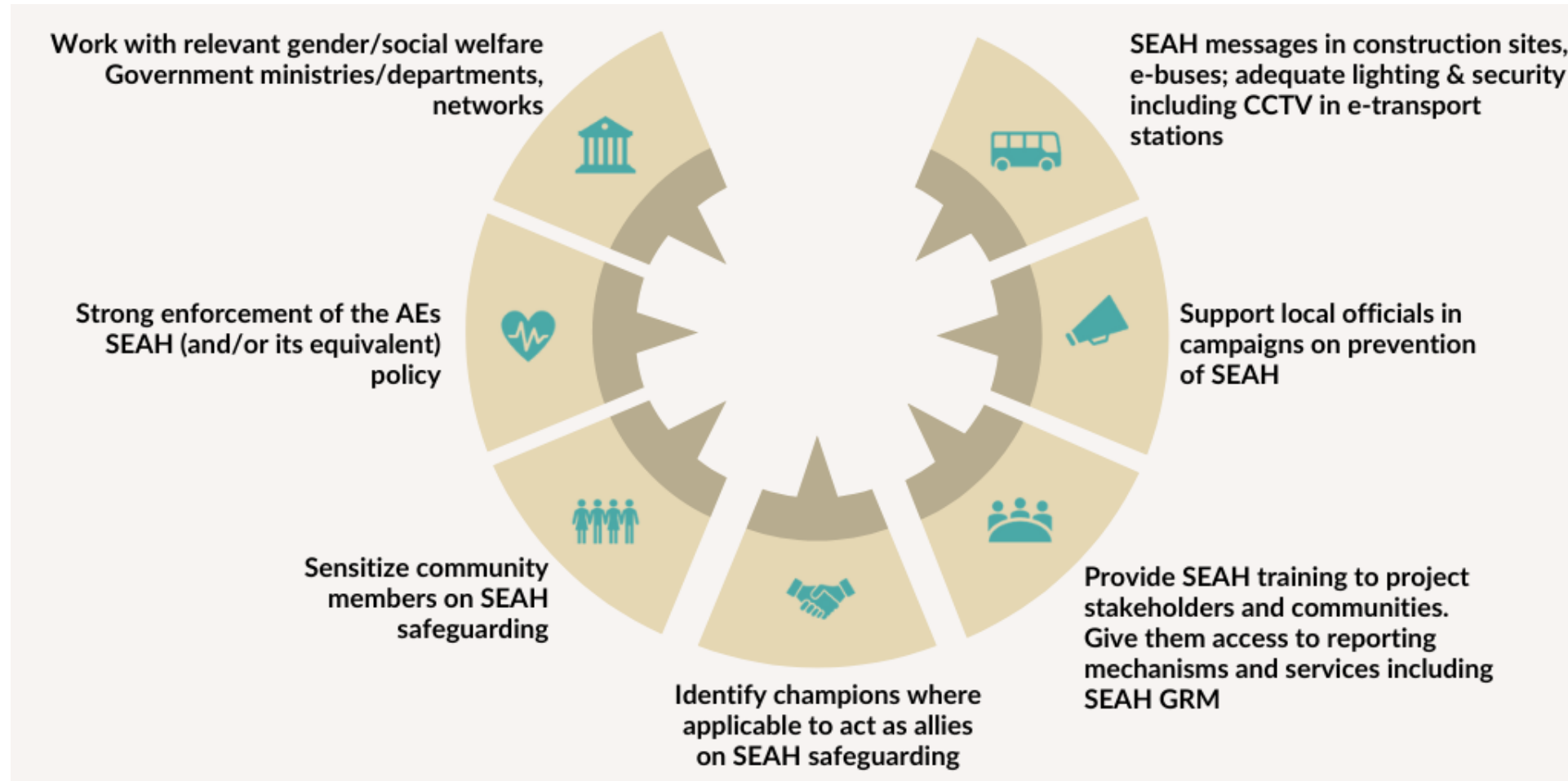


- Considers the SEAH-specific provisions in the RESP (applicable to all GCF-financed projects & programmes)
- Operationalizes the objectives and priorities in the SEAH Action Plan
- Applies to Secretariat (especially the programming divisions who work with AEs), AEs, EEs

# Examples of SEAH Risks in GCF financed activities



# Examples of SEAH risk mitigation measures



# GCF's Updated Gender Policy



- Women, as well as men, significantly contribute to combating climate change.
- Climate change impacts women and men differently, and women are often disproportionately affected.
- Gender inequality, exacerbated by climate change, is linked to vulnerability and risk.



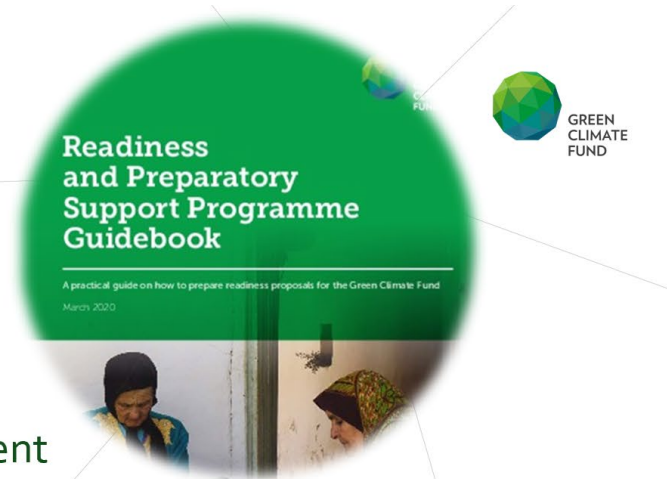


# Updated Gender Policy



## Requirements of the Gender Policy

- At Accreditation
  - Gender Policy
  - Competency and capacity to design and implement
- For Funding Proposals, SAPs, Readiness, NAPs etc.
  - Gender Assessment/Analysis
  - Gender Action Plan
  - Implementation, monitoring and reporting
  - Agreements



# Indigenous Peoples Policy



Pursue collaborative stakeholder engagement, such as ideation challenges and dedicated forums, with the Indigenous Peoples Advisory Group (IPAG) and with stakeholders including local communities, women, youth and civil society

## Note:

- GCF Indigenous Peoples scope extends beyond IFC Performance Standard 7
- Includes broad definition of Indigenous Peoples, with related requirements at FP stage

# Indigenous Peoples Policy

## SCOPE/WHY

Ensures that Indigenous Peoples

- (a) benefit from GCF activities and projects in a culturally appropriate manner; and
- (b) do not suffer harm or adverse effects from the design and implementation of GCF-financed activities.

## CRITERIA FOR IDENTIFICATION/WHO

- Self-identification as Indigenous Peoples
- Collective attachment to the environment, including ancestral territories and natural resources
- Customary distinct cultural, economic, social or political systems
- Distinct indigenous language often different from the official language of the country

Santo Domingo, Dominican Republic | 15–17 September 2025



## Indigenous Peoples Plan (IPP)

### - project/subproject specific

1. Baseline information, including methodology and references for obtaining the information.
2. Key findings and analysis of impacts, risks, and opportunities.
3. Measures to avoid, minimize, and mitigate negative impacts and enhance positive impacts and opportunities.
4. Community-based natural resources management (where applicable).
5. Results of consultation (during the environmental and social risks and impacts assessment process), the FPIC, and future engagement plans.
6. Benefit-sharing plans.
7. Tenure arrangements
8. Grievance redress mechanism
9. Costs, budget, timetable, organizational responsibilities.
10. Monitoring, evaluation, and reporting (participatory, community-based monitoring should be considered).

## Indigenous Peoples Planning Framework (IPPF)

### - To be identified projects/subprojects (i.e., Programmes)

1. The types of subprojects likely to be proposed for financing under the project.
2. The potential positive and adverse impacts of such programs or subprojects on indigenous peoples.
3. A plan for carrying out the assessment for such programmes or subprojects.
4. A framework for ensuring tailored meaningful consultations with indigenous peoples, and a framework for ensuring FPIC if applicable.
5. Institutional arrangements: necessary capacity building for screening project-supported activities, evaluating their effects on indigenous peoples, preparing IPPs, and addressing any grievances.
6. Monitoring and reporting arrangements.
7. Disclosure arrangement for IPPs to be prepared as specified in the IPPF.

- The plan, implementation, and documentation of the process of informed consultation, engagement, and FPIC, where relevant.
  - A description of the government-provided entitlements of affected indigenous peoples.
- The measures proposed for bridging any gaps between such entitlements and the requirement of these guidelines.
  - The financial and implementation responsibilities of the government agency and/or the accredited entity.



# Indigenous Peoples Policy

## Indigenous Peoples Advisory Group (IPAG),

- Identifies opportunities for enhancing indigenous peoples' participation in GCF including through Indigenous Peoples Advisory Group (IPAG), established at the end of 2021





# Operational Challenges and Impacts

A late identification of ESS, Gender and IP components results in inaccuracies, delays, and bottlenecks in the approval process, plus poor quality and risks downstream

## Challenges

- Need for quality proposals with all the information, documents and assessments with regard to GCF policy requirements

## Operational Impacts

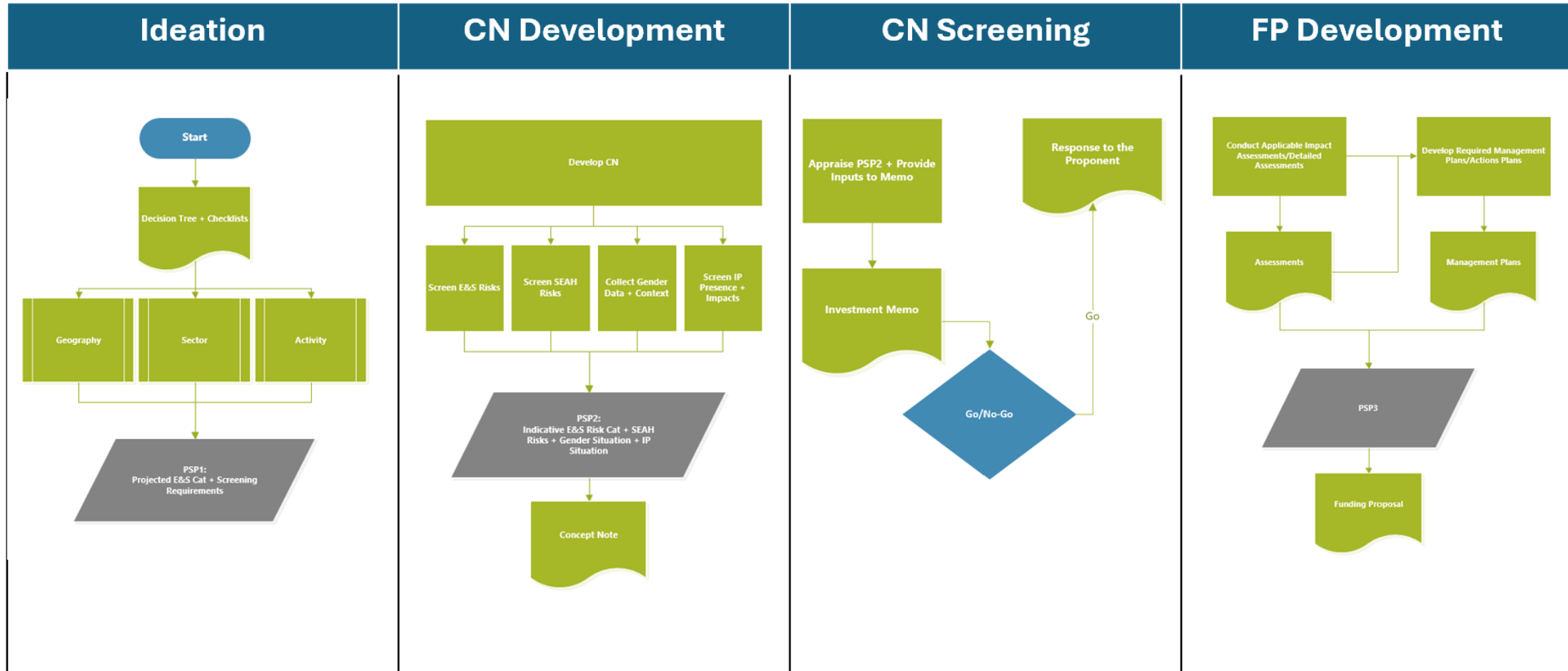
- Mis-categorization of proposals
- Delayed start of required assessments/studies and or need for revisions
- Unrealistic timelines for FP development and appraisal

## Strategic Impacts

- Delays in FP approvals and disbursements
- Poorer quality proposals and projects, reducing climate impact and increasing E&S risks downstream
- Reputational risks for both GCF and AEs

# Key Decision Tree Entry Points

Combination of Advisory, Provision of Guidance Tools, and Appraisals



# Tools

Applicable and different stages of the process



Ideation	CN Development	CN Screening	FP Development
<ul style="list-style-type: none"><li>➤ Advisory, if needed</li></ul>	<ul style="list-style-type: none"><li>➤ E&amp;S Risk Screening Checklist</li><li>➤ SEAH Risk Screening Checklist</li><li>➤ Gender Screening Checklist</li><li>➤ IP Screening Checklist</li></ul>	<ul style="list-style-type: none"><li>➤ Investment Memo (internal)</li><li>➤ Response to the Proponent</li></ul>	<ul style="list-style-type: none"><li>➤ Cat A/I-1 Applicability Guidance</li><li>➤ Cat B/I-2 Applicability Guidance</li><li>➤ SEAH Assessment Template</li><li>➤ Gender Assessment Template</li><li>➤ IP Screening Tool</li></ul>

# Relevant policies and guidelines

1. Revised Environmental and Social Policy: <https://www.greenclimate.fund/document/revised-environmental-and-social-policy>
2. IFC Performance Standards: <https://www.ifc.org/en/insights-reports/2012/ifc-performance-standards>
3. Sexual Exploitation, Abuse and Harassment (SEAH) risk assessment guideline: <https://www.greenclimate.fund/document/sexual-exploitation-abuse-and-harassment-seah-risk-assessment-guideline>
4. Action plan for addressing Sexual Exploitation, Sexual Abuse, and Sexual Harassment: <https://www.greenclimate.fund/sites/default/files/page/seah-action-plan-gcf-financed-activities.pdf>
5. Updated Gender Policy: <https://www.greenclimate.fund/document/gender-policy>
6. Indigenous Peoples Policy: <https://www.greenclimate.fund/document/indigenous-peoples-policy>
7. Operational guidelines: Indigenous Peoples Policy: <https://www.greenclimate.fund/document/operational-guidelines-indigenous-peoples-policy>
8. Sustainability Guidance Note: Designing and ensuring meaningful stakeholder engagement on GCF-financed activities: <https://www.greenclimate.fund/document/sustainability-guidance-note-designing-and-ensuring-meaningful-stakeholder-engagement-gcf>



# Thank you

**Santo Domingo, Dominican Republic**  
15–17 September 2025